

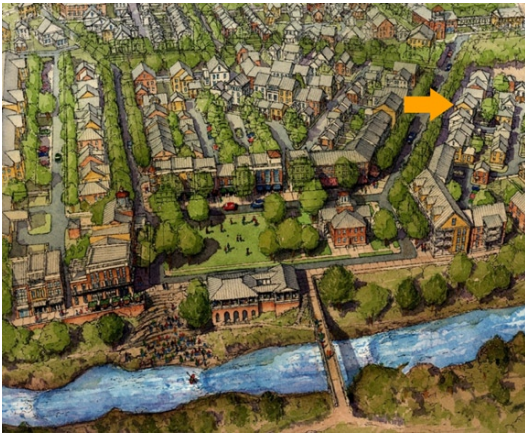
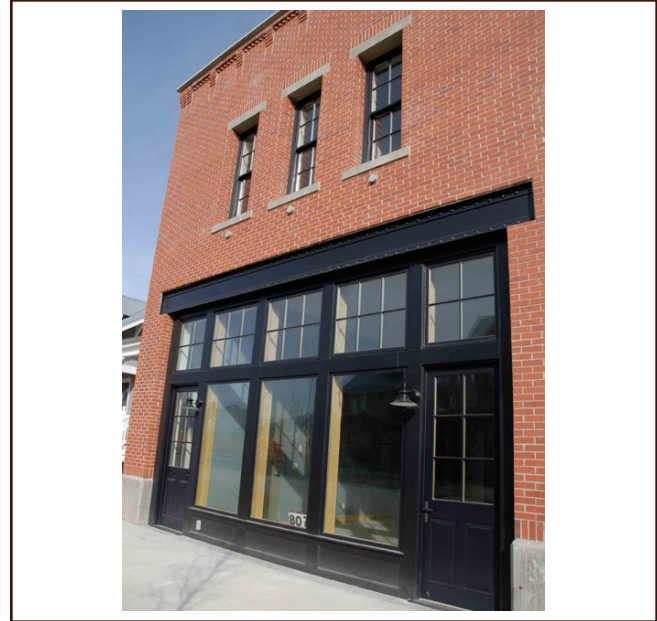


# SOUTH MAIN

WWW.SOUTHMAINCO.COM  
PO BOX 5246  
BUENA VISTA, CO 81211  
719.395.4714

## COMMERCIAL SPACE FOR LEASE

807 SOUTH MAIN STREET  
685 SQUARE FEET  
\$800 PER MONTH



## FEATURES

BRAND NEW CONSTRUCTION LOCATED IN SOUTH MAIN'S CENTRAL BUSINESS DISTRICT. PERFECT LOCATION FOR BUSINESSES LIKE A CAFE, GALLERY, COFFEE OR ICE CREAM SHOP. OR SUPPLY THE CLIMBING, KAYAKING MOUNTAIN BIKING OR FISHING COMMUNITY WHERE THEY NEED IT, WHEN THEY NEED IT. ONE-MINUTE WALK FROM THE RIVER PARK, NEW CLIMBING BOULDERS, EDDYLINE RESTAURANT & BREWERY AND ROCK RUN FINE ART GALLERY.

- AVAILABLE NOW
- COMMERCIAL TENANT APPLICATION AVAILABLE AT 901 SOUTH MAIN STREET REALTY OFFICE
- SIDEWALK SEATING PERMITTED
- ADA BATHROOM AND STORAGE SPACE
- AMPLE ON-STREET PARKING



SOUTH MAIN

WWW.SOUTHMAINCO.COM  
PO BOX 5246  
BUENA VISTA, CO 81211  
719.395.4714

CALL US TODAY  
719-395-4714

